

Submittal Data Sheet

**Project
Information**

Project Number _____ Approval _____

Features

- Adjust oxygen to patient without entering the room
- Durable, easy to clean type 304 stainless steel front
- Click style flowmeter(s)
- 0 – 15 lpm flow
- Powder coated steel rough in box
- Inlet & outlet supply tubes provided with demand check's & DISS fittings
- May be plumbed left to right or right to left

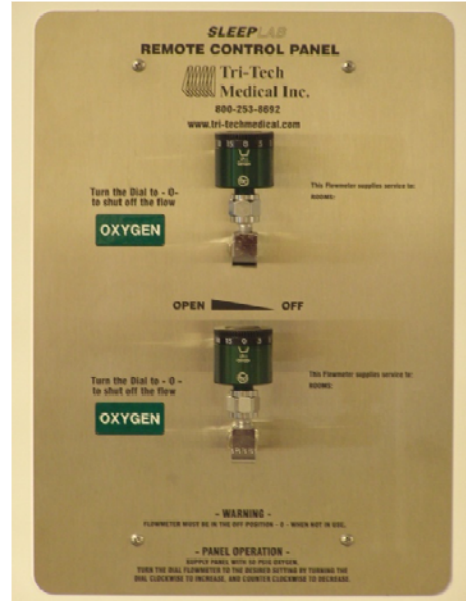
Specifications

All sleep lab control panels shall be Tri-Tech Medical, Inc. series and must be installed and tested in strict accordance with NFPA 99 standards and or other local codes before use.

Rough in box assembly shall be of 14 Ga. steel construction. Box shall be supplied with a plaster flange for easy mounting. Two 1/2" OD Type K copper stubs shall be supplied to facilitate piping to and from the box and to any remote outlets.

The sleep lab panel shall include panel mounted click style flowmeter(s) 0 - 15 lpm flow. Panel shall also include a front loaded CGA DISS gas specific outlet on the inlet and outlet tubes for easy connection/disconnection of the front panel without shutting down medical gases while servicing the panel.

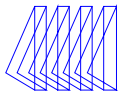
The gas control panel shall be factory piped and 100% tested. All components shall be panel mounted on a stainless steel, laser etched front panel.



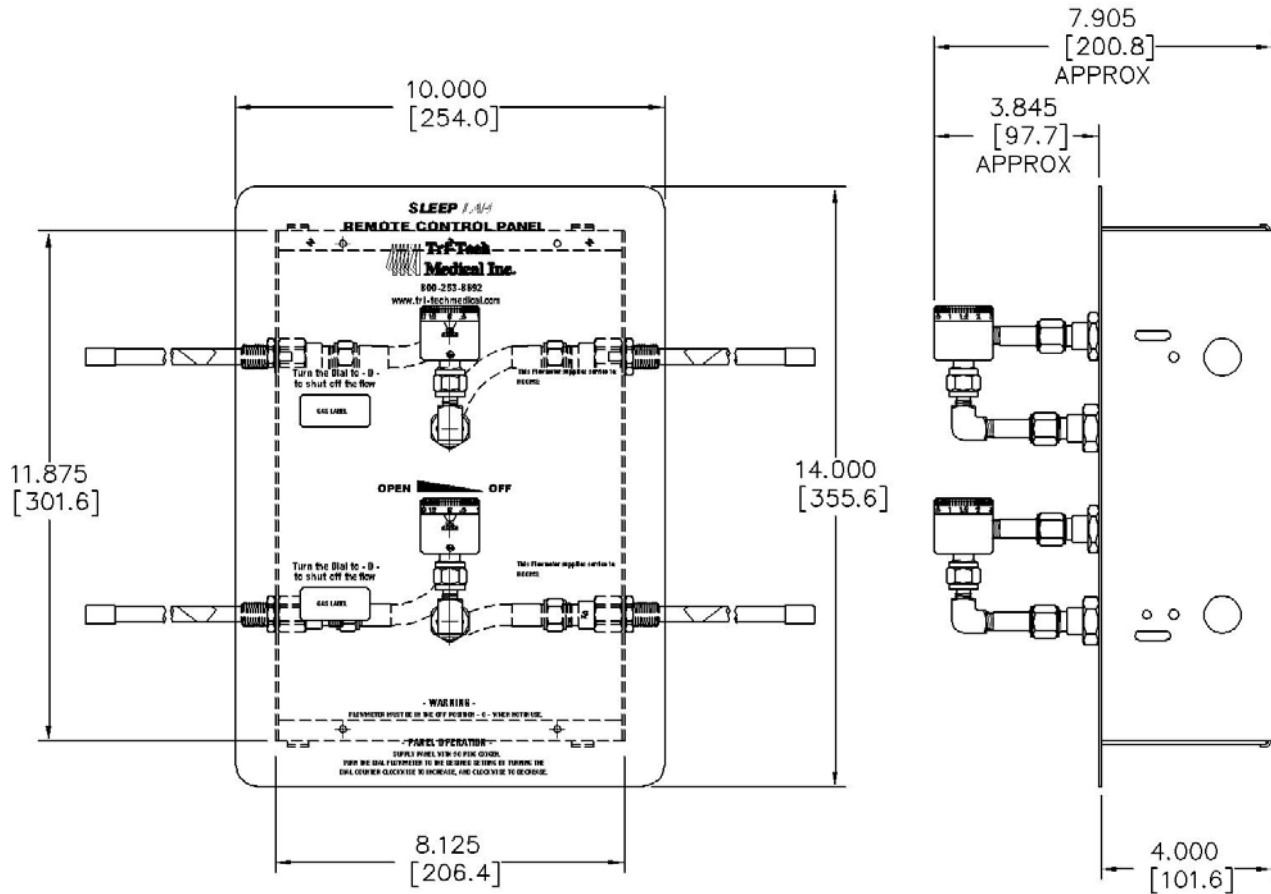
SLP-2 Sleep Lab Control Panel Shown

NFPA – (National Fire Protection Association Pamphlet 99” Health Care Facilities”) compliant.

CGA – (Compressed Gas Association Pamphlet V-5 “Diameter Index Safety System”) compliant.



Dimension - Inches
(mm)



How to Order

Part Number	Description
SLP-1	1 Bed Control Panel
SLP-2	2 Bed Control Panel