

Submittal Data Sheet

Features and Benefits

The Frontall™ DISS medical gas recessed outlets represent the most technically advanced means of providing medical gas connections to the central piping system. The outlets incorporate a unique patented **front-loaded** feature which makes the Tri-Tech Medical outlets **easy to repair**, saving valuable time and money for the health care facility.

- Five year parts and one year labor limited warranty*
- UL Listed to UL 1331 and CSA Z9170-1.
- Conforms to NFPA 99 and CGA standards
- Accepts DISS gas specific nut & nipple adapters
- Ease of maintenance without removing the faceplate using a cartridge insertion tool.
- Compensates for variation in wall thicknesses from ½” to 1 ¼”
- Modular design
- All outlets are 100% tested for flow and leaks
- Nameplate color coding per NFPA 99
- 5” centers
- 360° swivel inlet tube
- Metal back and nameplate
- Strength of connections provides support for dispensing equipment without the use of additional brackets
- Made in the U.S.A.

*See Terms and Conditions, Document No. 99-0477, on our website at: www.tri-techmedical.com for complete details.

Specification

The medical gas wall outlets shall be Tri-Tech Medical Frontall™ DISS medical gas outlets. The outlets shall be modular singles, and shall incorporate nameplate color-coding in accordance with NFPA 99. The single modular outlets shall be of a design that provides for ganging of rough-in plates in the field to form multiples. The gas services shall be sequentially arranged and located as shown on the plans with a minimum centerline spacing of 5 inches (12.5cm) between outlets.

The medical gas outlets shall be designed so that, once installed, routine service of both the primary and secondary check valves can be accomplished **without** removing the nameplate or gas specific portions. The primary check valve shall be unitized and of the cartridge type. So that the primary check valve can be removed for service without shutting off the gas supply to the outlet, the secondary check valve shall operate automatically to stop the free flow of the positive pressure gas. There shall be no secondary check for vacuum or WAGD services.

Medical gas outlets which require the removal of the nameplate or gas specific components for routine



Part Number XF1124A Shown

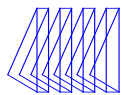
service shall not be acceptable. The seal between the nameplate and the rough-in shall be a double O-ring which is serviceable without shutting off the gas service and is capable of supporting 10 pounds @ 2” from the nameplate without leaking.

The outlet nameplate shall be permanently color-coded with a durable scratch resistant and protective label. The outlet trim plate shall be durable plastic, attached with the nameplate to the rough-in assembly, and provide automatic plaster adjustment from 1/2 to 1 1/4 of an inch (1.3 cm to 3 cm). The name of the gas service shall be permanently marked on the outlet bracket and the chrome plated brass outlet body. The outlet’s rough-in supply tube shall be a 7 inch (18 cm) length of 1/2 OD copper Type K, and labeled with the name of the gas service.

Medical gas outlets shall be cleaned for oxygen service in accordance with the current Compressed Gas Association (CGA) Pamphlet G-4.1, capped and placed in a protective container for shipment. The outlets shall be installed in strict accordance with manufacturer’s instructions, and tested before use in conformance with local and federal codes.

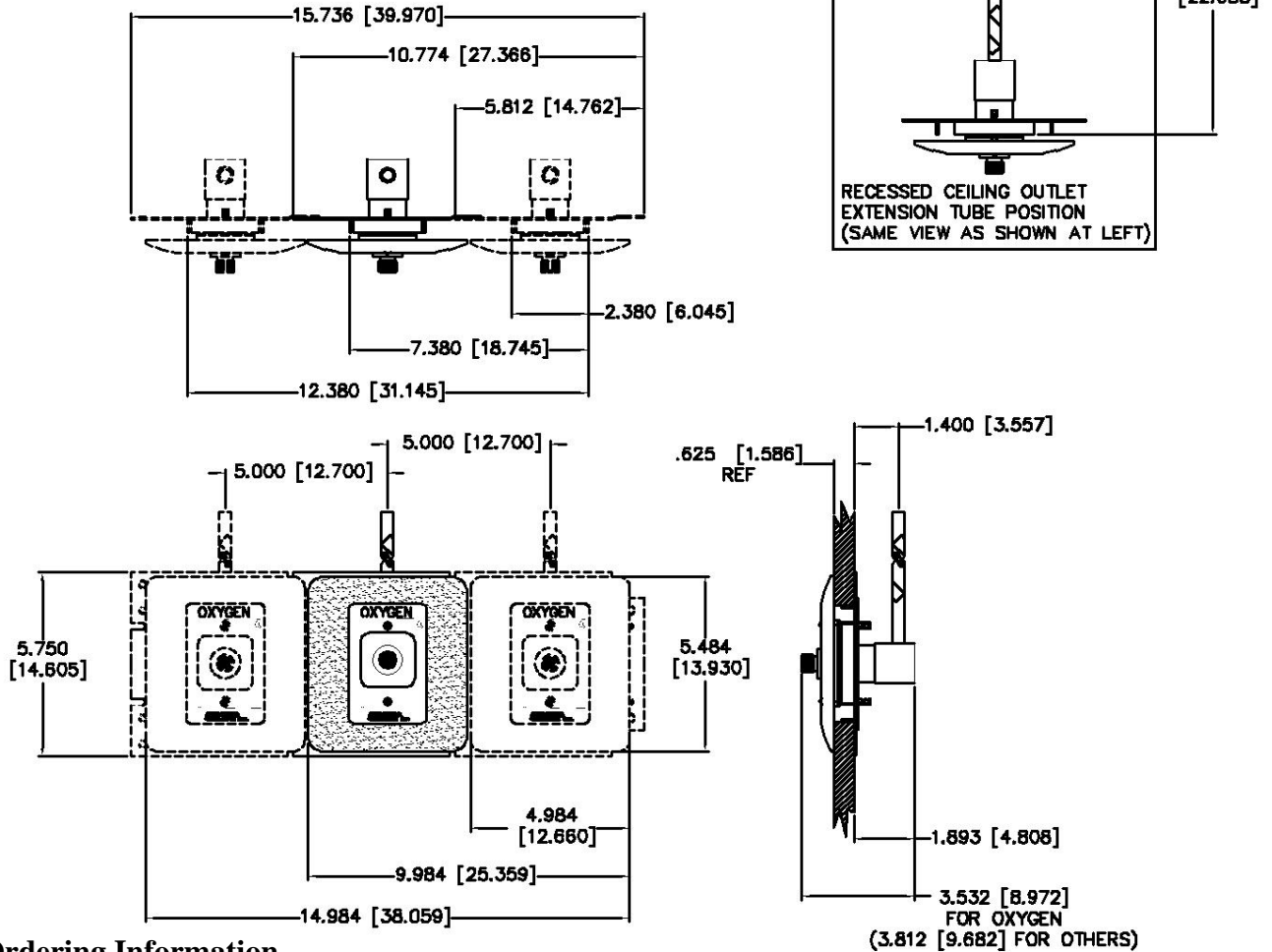
MRI compatible models are available (See ordering information chart) and are made with non-ferrous materials.





Layout

DIMENSION IN. (CM)



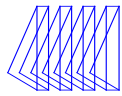
Ordering Information

Standard Recessed Outlets Complete - with the Plastic White Trim Plate

Gas Service	Recessed Complete		MRI Compatible	
	Wall	Ceiling	Wall	Ceiling
Nitrous Oxide	XF1104	XF1204	*XF1104-MRI	*XF1204-MRI
Carbon Dioxide	XF1108	XF1208	*XF1108-MRI	*XF1208-MRI
Nitrogen	XF1112	XF1212	*XF1112-MRI	*XF1212-MRI
Medical Air	XF1116	XF1216	XF1116-MRI	*XF1216-MRI
Medical Vacuum	XF1122	XF1222	XF1122-MRI	*XF1222-MRI
Oxygen	XF1124A	XF1224A	XF1124A-MRI	*XF1224A-MRI
WAGD	XF1132	XF1232	*XF1132-MRI	*XF1232-MRI
Instrument Air	XF112080	XF122080	*XF112080-MRI	*XF122080-MRI
Slide	XF1144	N/A	XF1144-MRI	N/A

*Indicates that these are **NOT** UL listed Outlets
Slides are not subject to UL Listing.

To place an order or request additional information call toll-free 1-800-253-8692 or fax us at 1-440-937-5060 or e mail us at sales@tri-techmedical.com. Please visit our web-site at www.tri-techmedical.com.



If Ordering Die Cast Trim Plates for Wall Outlets you need Back Bodies & Faceplates ordered Separately

Gas Service	Back Body ½ Tube Size Wall	MRI Compatible Wall	Outlet Faceplate	MRI Compatible	Trim Plate Die Cast White	Trim Plate Die Cast Pewter
Nitrous Oxide	XC1104-A	*XC1104-A-MRI	XF1004-A	*XF1004-A-MRI	XC1000-9DC	XC1000-9DCP
Carbon Dioxide	XC1108-A	*XC1108-A-MRI	XF1008-A	*XF1008-A-MRI		
Nitrogen	XC1112-A	*XC1112-A-MRI	XF1012-A	*XF1012-A-MRI		
Medical Air	XC1116-A	XC1116-A-MRI	XF1016-A	XF1016-A-MRI		
Medical Vacuum	XC1122-A	XC1122-A-MRI	XF1022-A	XF1022-A-MRI		
Oxygen	XC1124-A	XC1124-A-MRI	XF1024-A	XF1024-A-MRI		
WAGD	XC1132-A	*XC1132-A-MRI	XF1032-A	*XF1032-A-MRI		
Instrument Air	XC112080-A	*XC112080-A-MRI	XF102080-A	*XF102080-A-MRI		
Slide	Die Cast Pewter	Pewter MRI Compatible	Die Cast White	Die Cast White MRI Compatible		
	XF1144-DCP	XF1144-DCP-MRI	XF1144-DC	XF1144-DC-MRI		

If Ordering Die Cast Trim Plates for Ceiling Outlets you need Back Bodies & Faceplates ordered Separately

Gas Service	Back Body ½ Tube Size Ceiling	MRI Compatible Ceiling	Outlet Faceplate	MRI Compatible	Trim Plate Die Cast White	Trim Plate Die Cast Pewter
Nitrous Oxide	XC1204-A	*XC1204-A-MRI	XF1004-A	*XF1004-A-MRI	XC1000-9DC	XC1000-9DCP
Carbon Dioxide	XC1208-A	*XC1208-A-MRI	XF1008-A	*XF1008-A-MRI		
Nitrogen	XC1212-A	*XC1212-A-MRI	XF1012-A	*XF1012-A-MRI		
Medical Air	XC1216-A	XC1216-A-MRI	XF1016-A	XF1016-A-MRI		
Medical Vacuum	XC1222-A	XC1222-A-MRI	XF1022-A	XF1022-A-MRI		
Oxygen	XC1224-A	XC1224-A-MRI	XF1024-A	XF1024-A-MRI		
WAGD	XC1232-A	*XC1232-A-MRI	XF1032-A	*XF1032-A-MRI		
Instrument Air	XC122080-A	*XC122080-A-MRI	XF102080-A	*XF102080-A-MRI		

To place an order or request additional information call toll-free 1-800-253-8692 or fax us at 1-440-937-5060 or e mail us at sales@tri-techmedical.com. Please visit our web-site at www.tri-techmedical.com.