

Submittal Data Sheet

Features and Benefits:

The Frontall™ DISS medical gas recessed outlets represent the most technically advanced means of providing medical gas connections to the central piping system. The outlets incorporate a unique patented **front-loaded** feature which makes the Tri-Tech Medical outlets **easy to repair**, saving valuable time and money for the health care facility.

- Five year parts and one year labor limited warranty*
- U L Listed to UL 1331 and CSA Z9170-1.
- Conforms to NFPA 99 and CGA standards
- Accepts DISS style gas specific connectors
- Ease of maintenance without removing the faceplate using a cartridge service tool.
- Compensates for variation in wall thicknesses from 1/2" to 1 1/4"
- Modular design
- All outlets are 100% tested for flow and leaks
- Gradate nameplate color coding per NFPA 99
- 5" centers
- 360° swivel inlet tube
- Strength of connections eliminates unintended disconnects and provides support for dispensing equipment without the use of additional brackets
- Made in the U.S.A.

*See Terms and Conditions, Document No. 99-0477, on our website at: www.tri-techmedical.com for complete details

Specification

The medical gas wall outlets shall be Tri-Tech Medical Frontall™ DISS medical gas outlets. The outlets shall be modular singles, and shall incorporate nameplate color-coding in accordance with NFPA 99. The single modular outlets shall be of a design that provides for ganging of rough-in plates in the field to form multiples. The gas services shall be sequentially arranged and located as shown on the plans with a minimum centerline spacing of 5 inches (12.5cm) between outlets.

The medical gas outlets shall be designed so that, once installed, routine service of both the primary and secondary check valves can be accomplished **without** removing the nameplate or gas specific portions. The primary check valve shall be unitized and of the cartridge type. So that the primary check valve can be removed for service without shutting off the gas supply to the outlet, the secondary check valve shall operate automatically to stop

the free flow of the positive pressure gas services. There shall be no secondary check for vacuum or WAGD

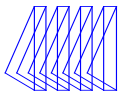


services. Medical gas outlets which require the removal of the nameplate or gas specific components for routine service shall not be acceptable. The seal between the nameplate and the rough-in shall be a double O-ring which is serviceable without shutting off the gas service and is capable of supporting 10 pounds @ 2" from the nameplate without leaking.

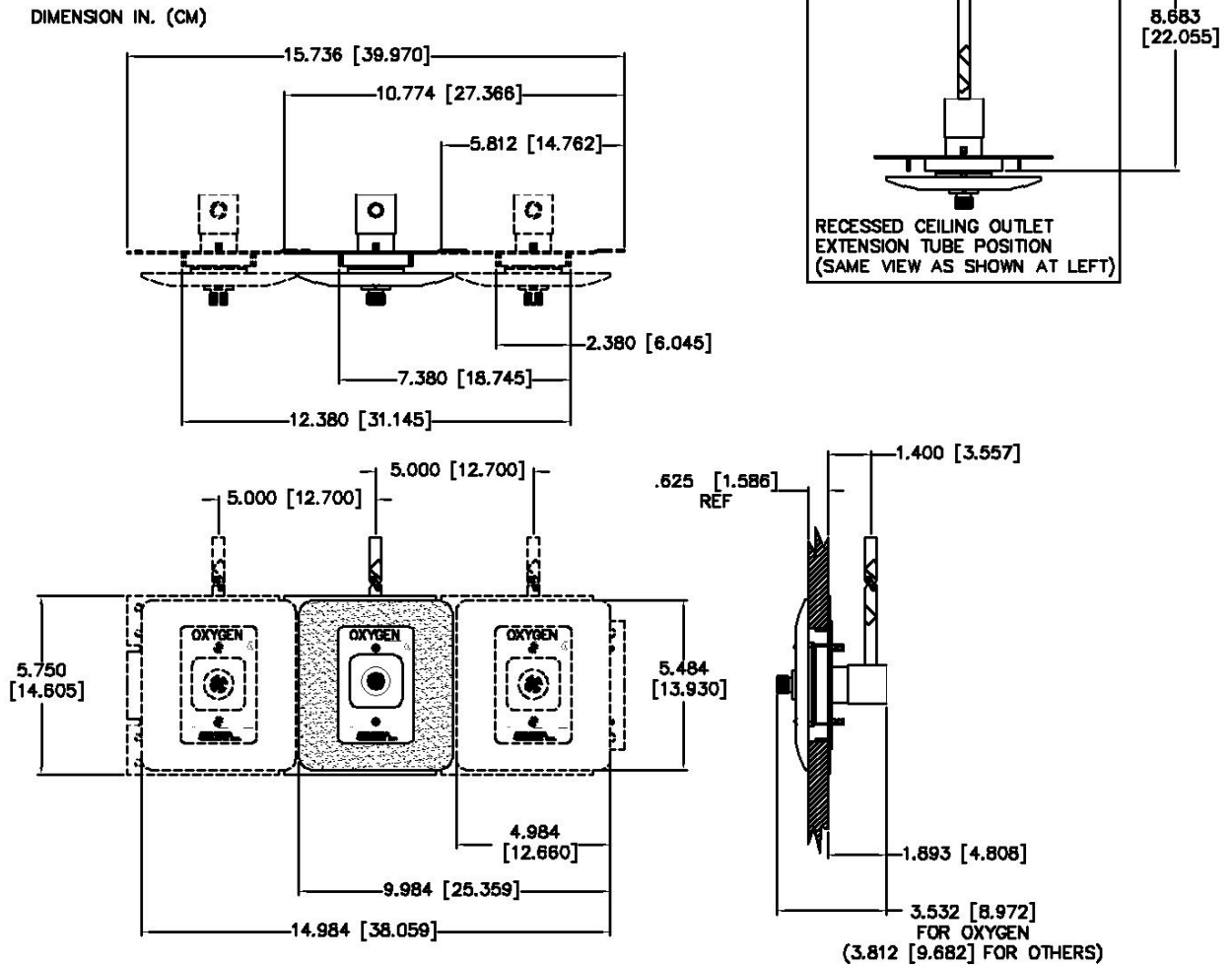
The outlet nameplate shall be permanently gradate color-coded. The outlet trim plate shall be die cast aluminum, powder coated pewter, attached with the nameplate to the rough-in assembly, and provide automatic plaster adjustment from 1/2 to 1 1/4 of an inch (1.3 cm to 3 cm). The name of the gas service shall be permanently marked on the outlet bracket and the chrome plated brass outlet body. The outlet's rough-in supply tube shall be a 7 inch (18 cm) length of 1/2 OD copper Type K, and labeled with the name of the gas service.

Medical gas outlets shall be cleaned for oxygen service in accordance with the current Compressed Gas Association (CGA) Pamphlet G-4.1, capped and placed in a protective container for shipment. The outlets shall be installed in strict accordance with manufacturer's instructions, and tested before use in conformance with local and federal codes.

MRI compatible models are available (see ordering information chart) and are made with non-ferrous metals.



Layout



**Indicates that these are NOT UL listed Outlets
Slides are not subject to UL Listing*

Ordering Information

Gas Service	Recessed Wall	Recessed Ceiling	MRI Compatible	
			Recessed Wall	Recessed Ceiling
Nitrous Oxide	DPN91XF1104	DPN91XF1204	*DPN91XF1104-MRI	*DPN91XF1204-MRI
Carbon Dioxide	DPN91XF1108	DPN91XF1208	*DPN91XF1108-MRI	*DPN91XF1208-MRI
Nitrogen	DPN91XF1112	DPN91XF1212	*DPN91XF1112-MRI	*DPN91XF1212-MRI
Medical Air	DPN91XF1116	DPN91XF1216	DPN91XF1116-MRI	*DPN91XF1216-MRI
Medical Vacuum	DPN91XF1122	DPN91XF1222	DPN91XF1122-MRI	*DPN91XF1222-MRI
Oxygen	DPN91XF1124A	DPN91XF1224A	DPN91XF1124A-MRI	*DPN91XF1224A-MRI
WAGD	DPN91XF1132	DPN91XF1232	*DPN91XF1132-MRI	*DPN91XF1232-MRI
Instrument Air	DPN91XF112080	DPN91XF122080	*DPN91XF112080-MRI	*DPN91XF122080-MRI
Slide	XF1144-DCP	N/A	XF1144-DCP-MRI	