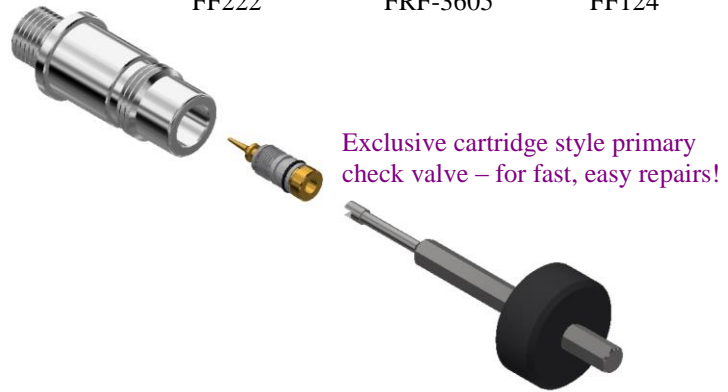
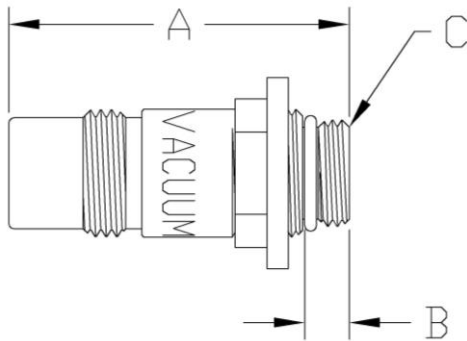


Medical Gas Coupler Outlet To Fit Fairfield™ Rail Systems

Does your facility have leaking or broken rail outlets that look like these?

You can now replace or repair your outlets!



Exclusive cartridge style primary check valve – for fast, easy repairs!

Gas Service	A Overall Body Length (inches)	B Back Body Thread Length (inches)	C Back Body Threads	Complete Replacement Bodies Part No.	Replacement Cartridge Part No.	Cartridge Replacement Tool Part No.
Oxygen	1.75	.375	1/2-20 UNF 2A	FF124	F1024ARC	F9900CT
Oxygen	2.00	.275	5/8-28 UN 2A	FF224		
Oxygen	1.88	.493	9/16-18 UNF 2A LH	FRF-3604A		
Medical Vacuum	2.00	.375	5/8-18 UNF 2A	FF122	F1022RC	
Medical Vacuum	2.00	.275	5/8-18 UNF 2A	FF222		
Medical Vacuum	2.16	.493	9/16-18 UNF 2A	FRF-3605		
Medical Vacuum	2.16	.493	9/16-28 UN 2A	FRF-3613		
Nitrous Oxide	2.22	.493	9/16-28 UN 2A	FF104	F1004RC	
Nitrogen	2.00	.375	9/16-18 UNF 2A	FF112	F1012RC	
Nitrogen	2.16	.493	9/16-18 UNF 2A	FRF-3612		
Medical Air	2.00	.375	M14x1.25	FF116	F1000RC	
Medical Air	2.00	.275	M14x1.25	FF216		
Medical Air	2.16	.493	M14x1.25	FRF-3606		

Contact Tri-Tech for assistance – we'll help you select the correct item!