

---

**Submittal Data Sheet**

---

**Features and Benefits**

- Five year parts and one year labor limited warranty\*
- UL Listed to UL 1331 and CSA Z9170-1.
- Conforms to NFPA 99 and CGA standards
- Accepts Puritan Bennett gas specific compatible male adaptors
- Compensates for variation in wall thicknesses from 1/2" to 1 1/4"
- Gas specific indexing
- Modular design
- 5" centers
- All outlets are 100% tested for flow and leaks
- Nameplate color coding per NFPA 99
- 360° swivel inlet tube
- Made in the U.S.A.

\*See Terms and Conditions, Document No. 99-0477, on our website at: [www.tri-techmedical.com](http://www.tri-techmedical.com) for complete details.

**Specification**

The medical gas wall outlets shall be Tri-Tech Medical quick connect medical gas outlets. The outlets shall be modular singles, and shall incorporate nameplate color-coding in accordance with NFPA 99. The single modular outlets shall be of a design that provides for ganging of rough-in plates in the field to form multiples. The gas services shall be sequentially arranged and located as shown on the plans with a minimum centerline spacing of 5" inches (12.5 cm) between outlets.

The medical gas outlets shall be designed so that upon removal of the nameplate assembly, the secondary check valve shall operate automatically to stop the free flow of the positive pressure gas services. There shall be no secondary check for Medical Vacuum or WAGD services. The seal between the nameplate and the rough-in shall be a double O-ring which is serviceable without shutting off the gas service and is capable of supporting 10 pounds @ 2" from the nameplate without leaking.

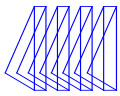
The outlet nameplate shall be permanently color coded with a durable, scratch resistant and protective label. The outlet trim plate shall be die cast aluminum, powder coated pewter, attached with the nameplate to the rough-in assembly, and provide automatic plaster adjustment from 1/2 to 1 1/4 of an inch (1.3 cm to 3 cm).



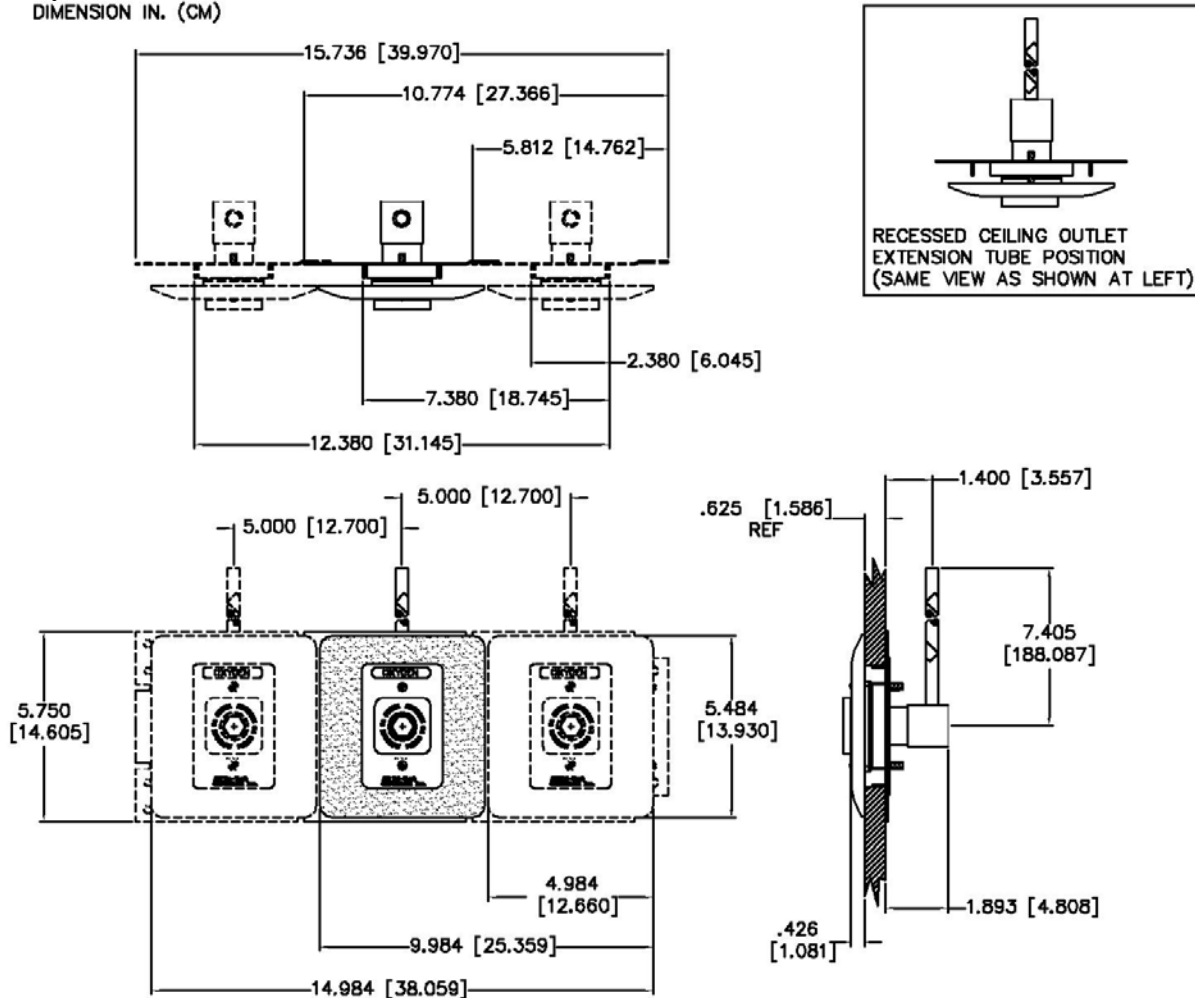
The name of the gas service shall be permanently marked on the outlet bracket and the outlet. The outlet's rough-in supply tube shall be a 7 inch (18 cm) length of 1/2 O.D. copper Type K for all gas services and labeled with the name of the gas service.

Medical gas outlets shall be cleaned for oxygen service in accordance with the current Compressed Gas Association (CGA) Pamphlet G-4.1, capped and placed in a protective container for shipment. The outlets shall be installed in strict accordance with manufacturer's instructions, and tested before use in conformance with local and federal codes.

MRI compatible models are available (see ordering information chart) and are made with non-ferrous metals.



Layout  
DIMENSION IN. (CM)



*\*Indicates that these are NOT UL listed Outlets  
Slides are not subject to UL Listing*

Ordering Information

Gas Service	Recessed Wall	Recessed Ceiling	MRI Compatible	
			Recessed Wall	Recessed Ceiling
Nitrous Oxide	ALN91XP1104	ALN91XP1204	*ALN91XP1104-MRI	*ALN91XP1204-MRI
Carbon Dioxide	N/A	N/A	N/A	N/A
Nitrogen	N/A	N/A	N/A	N/A
Medical Air	ALN91XP1116	ALN91XP1216	ALN91XP1116-MRI	*ALN91XP1216-MRI
Medical Vacuum	ALN91XP1122	ALN91XP1222	ALN91XP1122-MRI	*ALN91XP1222-MRI
Oxygen	ALN91XP1124	ALN91XP1224	ALN91XP1124-MRI	*ALN91XP1224-MRI
WAGD	ALN91XP1132	ALN91XF1232	*ALN91XP1132-MRI	*ALN91XP1232-MRI
Instrument Air	N/A	N/A	N/A	N/A

Slide	XF1144-DCP	N/A	XF1144-DCP-MRI	N/A
-------	------------	-----	----------------	-----